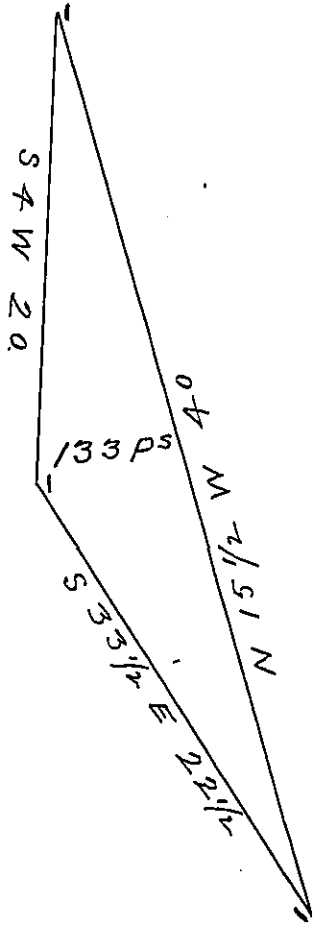


York County shore



Lancaster County shore

A Draught of Sunfish Island situate in the River Susquehanna in Manor Township Lancaster County, near the line of Hempfield lying between Charles Evers "Mud Island" and Michael Whislers Island Containing One hundred & thirty three perches Strict Measure, surveyed in pursuance of a Warrant dated the 27th day of August A D 1818 granted to Ezekiel Cook & Jacob Livingood.

Pr
Jacob Hibshman D.S.

To Jacob Spangler Esq^r }
Surveyor General }

IN TESTIMONY that the above is a copy of the original remaining on file in the Department of Internal Affairs of Pennsylvania, made conformably to an Act of Assembly approved the 16th day of February, 1833, I have hereunto set my Hand and caused the Seal of said Department to be affixed at Harrisburg, this eighteenth day of April 1904.

Joseph P. Dawson
Secretary of Internal Affairs.